



BETH EL CONGREGATION BULLETIN


JUNE - AUGUST 2026



AKRON, OHIO



SIVAN - ELUL 5786

FIND US ONLINE 
Find a full-color issue
online at bethelakron.com.



MATHEW MARKO
RABBI

One of life's great challenges is knowing what to say and what not to. Sometimes social conventions make choosing our words easier. "Mazal Tov" is always good for joyous occasions like weddings, B'nai Mitzvah, or the birth of a child.

It's much harder knowing what to say when tragedy strikes. We want to be helpful but are often at a loss for the right words to express sympathy and support. We want to "fix" things but don't know how, and sometimes say things that are unhelpful and painful. We want to call or make a shiva visit, but the fear

of not knowing what to do or say may hold us back.

Yet **ניחום אבלים/nihum aveilim**/comforting mourners is one of our greatest mitzvot. It's less about what we say than about simply being there, loving, and listening. Judaism teaches us not to philosophize, try to make sense of the loss, or attempt to "cheer up" the mourner, but rather to be there and to listen. In fact, initially, we're instructed to let the mourners begin the conversation and follow their lead.

I would like to offer some suggestions on what to say and what to do.

See RABBI, Page 8



SUSAN OSHEROW
PRESIDENT

Happy summer!

After a long winter and a rainy spring, it is a joy to finally welcome the sunshine. While the season often brings vacations and busier personal schedules, I want to personally invite you to continue joining us for Shabbat services. Your presence is what keeps our Beth El community vibrant and connected throughout the summer months.

Get involved this summer

If you are interested in sponsoring a Kiddush during the summer, please reach out to Erin. She will be happy to help you with all the necessary arrangements to honor a loved one or celebrate a milestone with the congregation.

See PRESIDENT, Page 2

TABLE OF CONTENTS

Synagogue Directory	2
Schedule of Services	2
June & July Calendars	3
August Calendar	4
Kiddush Sponsorships	4
June Yahrzeits	5
Beth El in Your Will	5
July Yahrzeits	6
Donate Non-Perisables	6
August Yahrzeits	7
Tree of Life	7
Thank You's	9
Contributions	10
Save the Date: Shul BBQ	12
Contribution Forms	13



Our Mission Statement

Beth El Congregation is a Conservative synagogue that meets the spiritual and social needs of our congregants by providing a welcoming, vibrant and engaging community for Jewish life and religious practice in an egalitarian, progressive and caring environment.



בית אל
Beth El
Congregation

750 White Pond Drive
Akron, OH 44320

www.bethelakron.com

Office: (330)864-2105
betheloffice750@gmail.com

Affiliated with



The United Synagogue of
Conservative Judaism



The Jewish Theological
Seminary of America

Mathew Marko
Rabbi

Stephen Grundfast
Rabbi Emeritus

Stephen Stein
Hazzan Emeritus

Jeremy Lipton
Rabbi Hazzan Emeritus

Susan Osherow
President

Marc Merklin
President-Elect

Julie Katz
Vice President

Randy Katz & Brian Merklin
Co-Treasurers

Morgan Domokos
Secretary

Erin Katz Ford
Executive Director
erinkatzford@bethelakron.org

Tab Scribner
Education Director
tscribner@bethelakron.org

Laurel Gress
Balat Koreh
laurelgress@neo.rr.com

Vol. LXXIX No. 2

Schedule of services

MORNING MINYAN: Wednesday & Friday, 7:30 a.m.

SHABBAT SERVICES: Saturday, 9:15 a.m.

CANDLE LIGHTING

June 5	<i>Beha'alotcha</i>	8:37 p.m.
June 12	<i>Sh'lach</i>	8:41 p.m.
June 19	<i>Korach</i>	8:43 p.m.
June 26	<i>Chukat-Balak</i>	8:44 p.m.
July 3	<i>Pinchas</i>	8:44 p.m.
July 10	<i>Matot-Masei</i>	8:41 p.m.
July 17	<i>Devarim</i>	8:38 p.m.
July 24	<i>Va'etchanan</i>	8:32 p.m.
July 31	<i>Eikev</i>	8:25 p.m.
August 7	<i>Re'eh</i>	8:17 p.m.
August 14	<i>Shoftim</i>	8:08 p.m.
August 21	<i>Ki Teitzei</i>	7:58 p.m.
August 28	<i>Ki Tavo</i>	7:47 p.m.

HAVDALAH

9:46 p.m.
9:51 p.m.
9:53 p.m.
9:54 p.m.
9:52 p.m.
9:49 p.m.
9:44 p.m.
9:37 p.m.
9:29 p.m.
9:19 p.m.
9:09 p.m.
8:58 p.m.
8:46 p.m.

PRESIDENT, from Page 1

Save the Date: Back to Shul BBQ

Please mark your calendars for our annual Back to Shul BBQ on August 30. This is always a highlight of our year and a wonderful opportunity for the entire congregation to come together for food, fun, and fellowship.

Leadership transitions

We recently installed several new officers and board members. I would like to extend a heartfelt thank you to Josh Dickstein for his exceptional dedication as our Treasurer. We are grateful that he will remain a valued member of the board.

Please join me in welcoming Randy Katz and Brian Merklin, who will be stepping into the roles of Co-Treasurers. We are also thrilled to welcome Kate Wilson to the board; she is also taking on the role of Education Chair. Having grown up at Beth El, Kate brings a deep personal connection and great enthusiasm to her new role. Finally, we express our deepest gratitude to Harvey Finkel, Hal Foster, Sarah Greenblatt, Meghan Newman, Debbie Saferstein, and Josh Shkolnik for their years of committed service on the board. Your contributions have been invaluable, and while your formal terms have ended, we look forward to your continued presence and future leadership within our community.

Thanks to all of you for everything you do for our Beth El family. Our congregation is special because of the kindness, friendship, and involvement of our members. Whether you come to services, attend programs, celebrate with us, or volunteer your time, you help make Beth El such a warm and welcoming community. I look forward to sharing many wonderful moments together in the months ahead. Wishing you all a safe, restful, and joyful summer. We look forward to seeing you at Shul soon!

June 2026 *Sivan* ★ *Tammuz* 5786

SUNDAY	MONDAY	TUESDAY	WEDNESDAY	THURSDAY	FRIDAY	SATURDAY
	1 16 <i>Sivan</i>	2 17 <i>Sivan</i>	3 18 <i>Sivan</i> Minyan, 7:30 a.m.	4 19 <i>Sivan</i>	5 20 <i>Sivan</i> Minyan, 7:30 a.m.	6 21 <i>Sivan</i> Shabbat Service, 9:15 a.m., <i>Beha'alotecha</i>
7 22 <i>Sivan</i>	8 23 <i>Sivan</i>	9 24 <i>Sivan</i> Full Board Meeting, 7 p.m.	10 25 <i>Sivan</i> Minyan, 7:30 a.m.	11 26 <i>Sivan</i>	12 27 <i>Sivan</i> Minyan, 7:30 a.m.	13 28 <i>Sivan</i> Shabbat Service, 9:15 a.m., <i>Sh'lach</i>
14 29 <i>Sivan</i>	15 30 <i>Sivan</i> Rosh Chodesh	16 1 <i>Tammuz</i> Rosh Chodesh	17 2 <i>Tammuz</i> Minyan, 7:30 a.m.	18 3 <i>Tammuz</i>	19 4 <i>Tammuz</i> Minyan, 7:30 a.m.	20 5 <i>Tammuz</i> Shabbat Service, 9:15 a.m., <i>Korach</i>
21 6 <i>Tammuz</i>	22 7 <i>Tammuz</i>	23 8 <i>Tammuz</i>	24 9 <i>Tammuz</i> Minyan, 7:30 a.m.	25 10 <i>Tammuz</i>	26 11 <i>Tammuz</i> Minyan, 7:30 a.m.	27 12 <i>Tammuz</i> Shabbat Service, 9:15 a.m., <i>Chukat-Balak</i>
28 13 <i>Tammuz</i>	29 14 <i>Tammuz</i>	30 15 <i>Tammuz</i>	SERVICES (unless otherwise noted) Wednesday 7:30 a.m. ★ Friday 7:30 a.m. ★ Saturday 9:15 a.m.			

July 2026 *Tammuz* ★ *Av* 5786

SUNDAY	MONDAY	TUESDAY	WEDNESDAY	THURSDAY	FRIDAY	SATURDAY
			1 16 <i>Tammuz</i> Minyan, 7:30 a.m.	2 17 <i>Tammuz</i>	3 18 <i>Tammuz</i> Minyan, 8:30 a.m.	4 19 <i>Tammuz</i> Shabbat Service, 9:15 a.m., <i>Pinchas</i>
5 20 <i>Tammuz</i>	6 21 <i>Tammuz</i>	7 22 <i>Tammuz</i>	8 23 <i>Tammuz</i> Minyan, 7:30 a.m.	9 24 <i>Tammuz</i>	10 25 <i>Tammuz</i> Minyan, 7:30 a.m.	11 26 <i>Tammuz</i> Shabbat Service, 9:15 a.m., <i>Matot-Masei</i>
12 27 <i>Tammuz</i>	13 28 <i>Tammuz</i>	14 29 <i>Tammuz</i>	15 1 <i>Av</i> Minyan, 7:30 a.m. Rosh Chodesh	16 2 <i>Av</i>	17 3 <i>Av</i> Minyan, 7:30 a.m.	18 4 <i>Av</i> Shabbat Service, 9:15 a.m., <i>Devarim</i>
19 5 <i>Av</i>	20 6 <i>Av</i>	21 7 <i>Av</i>	22 8 <i>Av</i> Minyan, 8:30 a.m. Tishah B'av service, 8:30 p.m.	23 9 <i>Av</i> Tishah B'av	24 10 <i>Av</i> Minyan, 7:30 a.m.	25 11 <i>Av</i> Shabbat Service, 9:15 a.m., <i>Va'etchanan</i>
26 12 <i>Av</i>	27 13 <i>Av</i>	28 14 <i>Av</i>	29 15 <i>Av</i> Minyan, 7:30 a.m.	30 16 <i>Av</i>	31 17 <i>Av</i> Minyan, 7:30 a.m.	

A note on Kiddush and Breakfast Sponsorships

As costs are ever increasing, we have made the decision to raise our Kiddush and Breakfast sponsorship rates.

It is now \$360 to sponsor a Shabbat Kiddush, which includes 4 of the following items (tuna salad, egg salad, quinoa salad, asian noodle salad, green salad, quiche, kugel). This would be in addition to the usual bagels, fruit, hummus, pita chips, veggies, and pastry. This feeds about 50 people. Additionally, the option to create your own menu and work directly with a caterer is always available.



Breakfast Sponsorships are now \$100 which includes: your choice of quiche or of french toast casserole. This would be in addition to scrambled eggs, bagels, cream cheese, pastry, fruit, coffee, orange juice. This feeds about 16 people.

August 2026 Av ★ Elul 5786

SUNDAY		MONDAY		TUESDAY		WEDNESDAY		THURSDAY		FRIDAY		SATURDAY	
SERVICES (unless otherwise noted) Wednesday 7:30 a.m. ★ Friday 7:30 a.m. ★ Saturday 9:15 a.m.												1 <i>18 Av</i> Shabbat Service, 9:15 a.m., <i>Eikev</i>	
2 <i>19 Av</i>	3 <i>20 Av</i>	4 <i>21 Av</i>	5 <i>22 Av</i> Minyan, 7:30 a.m.	6 <i>23 Av</i>	7 <i>24 Av</i> Minyan, 7:30 a.m.	8 <i>25 Av</i> Shabbat Service, 9:15 a.m., <i>Re'eh</i>							
9 <i>26 Av</i>	10 <i>27 Av</i>	11 <i>28 Av</i> Full Board Meeting, 7 p.m.	12 <i>29 Av</i> Minyan, 7:30 a.m.	13 <i>30 Av</i> Rosh Chodesh	14 <i>1 Elul</i> Minyan, 7:30 a.m. Rosh Chodesh	15 <i>2 Elul</i> Shabbat Service, 9:15 a.m., <i>Shoftim</i>							
16 <i>3 Elul</i>	17 <i>4 Elul</i>	18 <i>5 Elul</i>	19 <i>6 Elul</i> Minyan, 7:30 a.m.	20 <i>7 Elul</i>	21 <i>8 Elul</i> Minyan, 7:30 a.m.	22 <i>9 Elul</i> Shabbat Service, 9:15 a.m., <i>Ki Teitzei</i>							
23 <i>10 Elul</i>	24 <i>11 Elul</i>	25 <i>12 Elul</i>	26 <i>13 Elul</i> Minyan, 7:30 a.m.	27 <i>14 Elul</i>	28 <i>15 Elul</i> Minyan, 7:30 a.m.	29 <i>16 Elul</i> Shabbat Service, 9:15 a.m., <i>Ki Tavo</i>							
30 <i>17 Elul</i> Shul BBQ, 4 p.m.	31 <i>18 Elul</i> Chai Elul												

June Jahrzeits

JUNE 1

Isaac Liberman
Irving Narotsky
Helen Rosenfeld
Irving Spector

JUNE 2

Mollie Brotsky
David Hoffman
Esther Miller
Minnie Roth
Myrna Scheinbart
Anna Wainer

JUNE 3

Norman A. Freedman
Arthur Winer

JUNE 4

Betty Fields
Ann Joan Freedman
Lee Greenlick
Louis Shifrin
Sarah Zwelling

JUNE 5

Leonard Korsun
Rose Luck
Esther Wish

JUNE 6

Edith Adler
Phyllis Jacobson
Hyman Lerner
Frank Nelson
Leo Reiser
Rose Sinder

JUNE 7

Myer Caplan
Walter Cohen
Erin Geller
Gustave L. Levinson
Bela Lowy
William Neiman
David Sapp
Louis Sherman
Bertha Stein

JUNE 8

Alex Levitt

JUNE 9

Nathan Kropko
Paul Leventhal
Mary Marks
Caryn Olczyk
Sylvia Rosenthal

JUNE 10

Idelle Kodish
Raymond Ott
Anna Shecht
Jacob Shulansky

JUNE 11

Katie Backer
Rose Bear
Goldie Cohn
Lena Hyman
Sylvia Kleinberg
Hyman Milkman
Marlene Miller
Leo Romisher
Eleanore Rudick
Abraham Sosnoff

JUNE 12

Fannie Berloff
Rosa Kobotsnick
Sybil Kriger
Sol Regal
Bessie Senser
Milton Slavin

JUNE 13

Samuel Budzanover
Sally Finkel
Harold Levin
Helen Levin
Molly Opas
Dorothy (Dolly)
Richman
Libby Schneir
Ben Slavin

JUNE 14

Rose Cohen
Sanford Levenson
Joyce Oppenheimer
Irving Osherow
Fanny Radam
Golda Savloff
Richard Sterns

JUNE 15

Beatrice Glauberman
Esther Weiss
Frieda Zaas

JUNE 16

Harry Auerbach
Carl M. Fertel
Morris Kaufman
Sam Sarbey

JUNE 17

Sarah Foster
Susan Glauberman

JUNE 18

Shirley Borodkin
Jodi Merklin James
Morris Katzenberg
Milton Luck
Katie Wolfand

JUNE 19

Louis Gergis
Ruth L. Mulfelder
Max Robinson
Hyman Selcer
Judith Wyant

JUNE 20

Jennie Krupp
Dave Lowy
Rose Pinsky

JUNE 21

Sy Fischer
Harry Leeper
Deborah Rotbard
Jack Rubens
Morris Sacks

JUNE 22

Norwin Brovitz
Manuel Cohen
Paul Greenlick
Esther Kates
Richard Merkin
Eugene Treiber
Samuel Wakser

JUNE 23

Sydney J. Horowitz
Sadie Ekus Manes
Edward Salzman
Ethel Wolf Sands

JUNE 24

Libby Esral
Jerry Kodish
Robert Kranitz
Minnie Mirman
Bernard Penner
Cathy Wakser
Rose Wiener

JUNE 25

Rebecca Albert
Herschel Kriger
Milton Pren
Ida K. Schwartz
John Waits

JUNE 26

Barnet Beyer
Anna Kalish
Samuel Leubitz
Ben Merkin
Zelda Rosenthal

JUNE 27

Max Keane
Leah Lieberman
Dina Savage
David Sokol

JUNE 28

Samuel C. Bershon
Rose Sholiton

JUNE 29

Alan Gordon
Miriam Levenson
Samuel Tucker

JUNE 30

Florence Lessing
Sam Radam
Ruth Rakusin
Henry Saul Shaw
Sol Slavin



Don't forget Beth El in your will

For information, call Endowment Chair **MARSHA FRIEDMAN**
(330)603-1890

July Yahrzeits

JULY 1

Tillie Guren
Louis Medvin
Evelyn Weinberger

JULY 2

Joseph Leeper
Ida Stambor
Elias Weindenfeld
Blanche Yonas

JULY 3

Bessie Klausner Federhar
Abraham Kodish
Theodore Levenson
Rose K. Marks
Herbert Moss
Selma Seider

JULY 4

Rose Caplan
Richard Friedman
Nathan Katz
Anna Stein

JULY 5

Edward Goldstein
Adelle Gourse
Estelle Hellman
Anna Liberman
Chana Liberman
Robert Rabinovitz
Henry Rubin
Rose Ethel Winer

JULY 6

Anna May Kamin
Janice Woll

JULY 7

Philip Kraus
Jack Marshall
Benjamin Weiss

JULY 8

Sheldon Fogel
Natalee Hendler
Ida S. Waxman

JULY 9

Sonya Buksdorf
David Friedman
Carol Gergis
Israel Charles Goldberg
Mayer Millman
Dr. Leo Rubin

JULY 10

Dr. Sidney J. Eichner
Martin Mermelstein
Pauline Wolman
Max Zaas

JULY 11

Toby Gertrude Kaufman
Ida Rabinowitz
Jonathan Schachter
Luba Small
Louis Weselman

JULY 12

Pearl Schwartz
Edna Sokol

JULY 13

David Neuringer
Sonia Simon

JULY 14

Jacob Braunstein
Martha Feingold
Anna Weinstein

JULY 15

Ruth Berloff
Rose A. Friedman
Doris Minkin
Blanche Nusbaum
Matthew Rivitz
David Rosenfeld
Bertha Weissfeld

JULY 16

Marvin Cohen
Jack Sarbey
Edward Schneider
Miriam Vengrow

JULY 17

Edward Bloom
Ida Kern
Gertrude Monosoff
Ralph Peters
David Savloff

JULY 18

Fred Finger
Alan Grundfast
Stefan Handler
Fay Morris
Alan Woll

JULY 19

Simon Bear
Louis Leeper
Jeanette Levinson
Marjorie Robbins
Stanley B. Schneiderman
Jayne Sokol

JULY 20

Jennie E. Goldberg
Rita Lockshin
David Nelson
Benjamin Roth
Heinrich Y. Steinhauer

JULY 21

Sarah Cohen
Harriet Horn
Mary Potrock
Jacob Wolf

JULY 22

Rose Borchardt Kahan
Alan Kay
Susan A. Myers
Jay Nusbaum
Netti Pollack

JULY 23

Louis Adelman
Max Federhar
Abraham Kaufman
Zella Kaufman
Elka Tauba Schnur
Fay Siegel
Elia Simon
Helen B. Steinreich

JULY 24

Anna Friedman
Arnold Goldstein
Jacob Hersh
Bryan May
Jeremy Putra
Morris Ruben

JULY 25

Dorothy Bloom
Gershon Feffer
Leonard Katz
Nathan Kraus
Reuben B. Manes
Sylvia Post
Elsie Pren

JULY 26

Sol Katz
Roni Marks
Bessie Penner
Max Rogovy
Ada H. Sacks
Dr. William Schneider
Lottie B. Simon

JULY 27

Irving Botnick
Sylvia Lewis
Anne Liberman
Milton Shere
Lena B. Zoob

JULY 28

Harry H. Davis
Maurice Goldman
Louis Kay
Sam Liberman
Hyman Ben Marks
Murray Schwartz

JULY 29

Bessie Baskin
Edward Sarbey

JULY 30

Barbara Cohen
Harold Levinson
Dennis Luck
James Luck

JULY 31

Milton Kodish
Mollie Mirman
Alma Reuben



Donate non-perishables

Beth El has an easy and wonderful way to do meaningful *Mitzvot*! Consider bringing non-perishable food items to donate. The magnificent wooden food basket crafted by Dick Rossen "OBM", is located just inside the main lobby door of the Synagogue. Let's see if we can fill the basket to the brim!

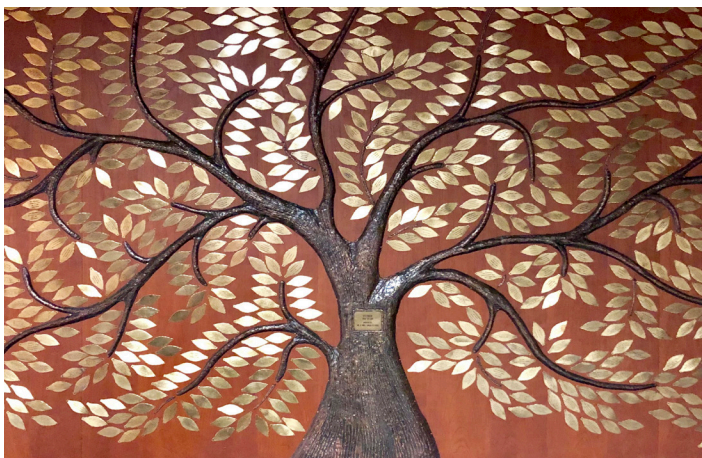
August Yahrzeits

AUGUST 1

Lawrence Siff

AUGUST 2Selma H. Paskal
Ralph Leonard Willen**AUGUST 3**Rose Belenky
Sam Finkel
Rebecca Lipson
Joel Zelin**AUGUST 4**Murray Glauberman
Joseph Glick
Jeannette Medvin
Rachel Morris
Rev. Phillip Salzman**AUGUST 5**Hymen Freidland
Ruth Kahan
Samuel David Katz
Sam E. Kelly**AUGUST 6**Gertrude Luck
Alexander Medoff**AUGUST 7**Rebecca Gershten
Pauline Pessio**AUGUST 8**Samuel Feinman
Ella Trina Fishel
Irving Kauvar
Lita Talisman
Harvey Woll**AUGUST 9**Burton Belsky
Chaye Libby Kraus
Frances Winer**AUGUST 10**Isaac Cohen
Cheryl Spector De Armas
Abraham D. Feffer**AUGUST 11**Himon Farber
Joe Firestone
David Harley Goldberg**AUGUST 12**Bertha Gross
Louis Lockshin
Murray Wiener**AUGUST 13**Sarah Cohen
Celia Goldberg
Morris Greenblatt
Alihu Klein
Louis A. Kramer
Rebecca Leeper
Max Oleser
Ruth Rosen
Barney Snyder**AUGUST 14**Robert Benson
Jennie Fleisher
Jacob Luckey
Dave Shecht
Ethel Widlus**AUGUST 15**Frieda Leventhal
Julius Lowry
Archy May
Israel Sass**AUGUST 17**Dora Beja-Sardas
Rose Kodish
Jerry Salzman
Max Widlus
Stuart Willen**AUGUST 18**Gertrude Abosch
William Fogel
Benjamin Heisler
Margaret Schweda**AUGUST 19**Herbert Kern
Mina Lichtman
Gary Osherow**AUGUST 21**Cheryl Carter
Betty Leberberg
Benjamin Leeper
Jacob Morris
David Schneir
Sol Wagan
Carl Waxman**AUGUST 22**Betty Cheplowitz
David Leubitz
Phillip P. Rich
Leo Rohrheimer
Rose Rossen
Goldie Schorin
Anna Sherman**AUGUST 23**Charles Cooper
Marvin Greenbaum
Margaret Kodish
Belle Magilavy
Lillian Nelson
Etta Snyder**AUGUST 24**Rose Budzanover
Rose Schwartz**AUGUST 25**Herman Jack Cohen
Emanuel Corman
Arnold Ehrenberg
Bernard Hellman
Herbert Yabroff
Stanley Zalob**AUGUST 26**Julia Rae Goldman
Jack Mostow
Ernest Richman
Lawrence Schwartz
Joseph Sholiton
Harry Winer**AUGUST 27**Robert Allen
Eleanor Friedman
Ruth Friedman
Yetta Garfinkel
Clara Leeper
Robert Milkman
Edith Shere**AUGUST 28**Minnie Brown
Judith Friedman
Edna Kaufman**AUGUST 29**Laurel Fischer
Ida Potrock
Bessie Rothkin
Pearl Wagan
Al Willdman**AUGUST 30**Fannie Farber
Morris Kaufman
Rachmiel Cohen Levenson
Sarah Schneiderman
Max Stan
Mollie Wiener**AUGUST 31**Helen Axelrod
Rae Eichner
Eva Gross
Lillian B. Gruber
Freda Leeper
Sally Mervis

*Please inform the office
of Yahrzeit omissions
or corrections.*



Tree of Life

Our magnificent Tree of Life was created to record the happy events in the lives of Beth El members and their families. A birth, a wedding, a Bar/Bat Mitzvah, a confirmation, an anniversary — all are among the milestones that can be remembered on the leaves of the Tree of Life.

The cost of a leaf is \$125. You may use three or four lines with up to 23 letters per line. To order, call **Sherri Leubitz (330)867-0364**



RABBI, from Page 1

Instead of saying, “I’m sorry,” which may be perceived as impersonal, try saying, “I’m so sorry to hear of _____’s death.” This acknowledges the person’s experience and gives them an opportunity, should they choose, to talk about the one they’ve lost and how they are feeling.

We want to empathize and might think of saying “I know how you feel,” or “I know what you’re going through because I lost _____.” But all grief is personal and unique, and the truth is, we DON’T know how they feel. Instead, try saying “I can only begin to imagine what you’re going through and how you’re feeling.” This shows we’re focusing on them and their individual experience. We can’t assume to know how they are feeling or thinking, so it’s ok to ask.

Especially in the early stages, people in mourning aren’t looking for theology...they’re trying to cope on the most basic levels. Don’t tell them their loved one is “in a better place.” For no matter what anyone believes, we can be sure they would rather have them still by their side. Don’t say “at least you had her for so many years” because after what number of years would any of us choose to lose someone we love? Don’t say, “God only gives us what we can bear,” because many people do not believe that God “give us”

sorrows, and we’ve all seen people who’ve gotten far more than they can handle.

Grievers often resent feeling that others “need” them to be better, so saying “you’re looking so much better” or asking, “are you feeling better yet?” while well-meant, is often not helpful. Instead, we can offer, “I don’t know what to say, but I am here. We can talk if you want, or I can just be with you.” It can feel uncomfortable to sit with someone in silence, but it can also provide more support than we realize.

There is no “right way” to grieve. Grief is personal and will be different for everyone. It’s ok to ask, “are there times of day that are harder or easier for you? What are some of the things that bring you comfort?” There are so many different emotional, physical, cognitive, and behavioral responses to grief, and what’s right for one may not be for another.

When people are grieving, they may find it difficult to ask for help, or even recognize what they need. We don’t have to wait for them to call and ask. Instead, we can take the initiative, offer to come over for a visit or bring them something to eat. And when we’re there, if we see something that needs to be done, we can ask their permission to do it.

It’s normal for someone to forget simple things as grieving can be an all-consuming process. Compassion and patience are key. We can offer

to help the griever to remember important appointments, projects, and events. A friendly reminder or an offer to accompany them to an appointment may be welcomed.

It’s hard to discern, but sometimes mourners just want to be left alone and may shut down if prodded too much. We can try to be as attentive and respectful of their feelings and wishes as possible. Being a good listener sometimes means holding back our opinions.

Sometimes we’re overly cautious and avoid talking about the person who died. But not mentioning their loved one can cause the griever to feel even lonelier and wonder if they’re the only person who remembers. It can be helpful to mention the person and share your memories. Even if the death was long ago, take a risk and say the person by name. If you know there’s an important life-cycle event approaching, be aware that this may bring out a strong reaction. But our remembering can bring tremendous comfort.

Ultimately, we’re all unique and process our losses differently. Accepting this is the first step to offering comfort. Time does not heal all wounds and we can’t fix everything. But by being sensitive to those we care about - by listening, attending, loving and just being there - we can help them find their own way through the darkness and discover how they can begin to move forward.

Thank you

THE SAFERSTEIN FAMILY

for sponsoring *Bima* flowers on
February 7 in memory of
RICHARD LESHIN

JEFF & THERESA THOMPSON

for sponsoring *Minyan* breakfast
on Feb 13 in memory of
DEAN FARRA

MARSHA FRIEDMAN

for sponsoring *Bima* flowers
on February 14 in memory of
STEPHEN HEYMAN

ALICE SCHNEIDER & FAMILY

for sponsoring *Bima* flowers
on February 28 in memory of
NATHAN PINSKY

JULIE & RANDY KATZ

for sponsoring *Minyan* Breakfast
on March 11 in memory of
ARNOLD WEINFELD

JOHN & STACY SHULAN

for sponsoring *Kiddush* on March
14 in honor of Stacy's birthday

ANDY & ELISABETH LEUBITZ

for sponsoring *Kiddush* and
SHERI LEUBITZ
for sponsoring flowers
on March 21 in honor of
the baby naming of
NOA ROSE LEUBITZ

ROBERT & REGINA COOPER

for sponsoring flowers
on March 28 in memory of
JEAN B. COOPER

THE SAFERSTEIN FAMILY

for sponsoring *Bima* flowers on
April 4 in memory of
CARL SAFERSTEIN

MORGAN, TAYLOR, & KAITLYN DOMOKOS

for sponsoring *Bima* flowers on
April 11 in memory of
SALLIE FISHMAN

MORGAN, TAYLOR, & KAITLYN DOMOKOS

for sponsoring *Bima* flowers on
May 2 in memory of
MAY SCHECHTER

JIM & SUSAN OSHEROW

for sponsoring *Kiddush*
on May 2 in honor of
RACHEL OSHEROW

THE SAFERSTEIN FAMILY

for sponsoring *Bima* flowers on
May 9 in memory of
GERRY SAFERSTEIN

ALICE SCHNEIDER & FAMILY

for sponsoring *Bima* flowers on
May 9 in memory of
STELLA WOLIVER and
LILLIAN SCHNEIDER

THE BERNS & ARONSON FAMILIES

for sponsoring *Bima* flowers on
May 9 in memory of
CLARA BERNS

MORGAN, TAYLOR, & KAITLYN DOMOKOS

for sponsoring *Bima* flowers on
May 16 in memory of
ALBERT FISHMAN

THE STOCK FAMILY

for sponsoring *Bima* flowers
on May 16 in memory of
MICHAEL STOCK

SHERRY & MARTY HELLMAN

for sponsoring *Minyan* breakfast
on May 29 in memory of
JOSEPH K. MARKS

THE STOCK FAMILY

for sponsoring *Kiddush* on May 30

THE MINSTER, ZELIN & KOCH FAMILIES

for sponsoring *Bima* flowers on
May 23 in memory of
STAN MINSTER

MARC MERKLIN

for sponsoring *Kiddush*
on May 23 in honor of
SHARON MERKLIN



SPONSORSHIPS AVAILABLE

Did you know that you can sponsor *Shabbat* flowers or *Kiddush* in honor of a milestone or in memory of *Yahrtzeit*? For more information, please call 330-864-2105 x 118 or email Erin Katz Ford.

Contributions

AARON KRANITZ MEMORIAL FUND

IN MEMORY OF

- ★ **Betty Levinson** from Joe & JoEllen Kodish
- ★ **Carl Lieberman** from Joe & JoEllen Kodish
- ★ **Ruth Sweet** from Joe & JoEllen Kodish and Florence Kranitz
- ★ **Ruth Temple** from Joe & JoEllen Kodish and Mimi Sufloff & Allan Tolchinsky

ALAN & JANICE WOLL EDUCATION FUND

IN MEMORY OF

- ★ **Ruth Sweet** from Ron & Sandi Lederman
- ★ **Ruth Temple** from Andrew & Jodi Mirman

BEATRICE & MORRIS SARLSON & FAMILY BEAUTIFICATION FUND

IN MEMORY OF

- ★ **Beatrice Sarlson** from Mark Sarlson
- ★ **Irwin Sarlson** from Mark Sarlson
- ★ **Morris Sarlson** from Mark Sarlson
- ★ **Stanford Sarlson** from Mark Sarlson
- ★ **Robert T. Stone** from Randy Stone & Larry Triola

BETH EL ENDOWMENT FUND

IN MEMORY OF

- ★ **Beatrice Sarlson** from Kathy Sarlson and family
- ★ **Ruth Sweet** from Martin Kohn

BETH EL FOUNDATION FOR JEWISH EDUCATION

IN MEMORY OF

- ★ **Jean B. Cooper** from Robert & Regina Cooper
- ★ **Evelyn Lemerman** from David & Susan Lemerman
- ★ **Victoria Willen** from the Rapport family

EDWARD SCHNEIDER EDUCATION FUND

IN HONOR OF

- ★ **the birth of Sadie Phoebe Spector** from Alice Schneider

- ★ **the Bat Mitzvah of Yael Moss** from Myron & Andrea Rabinovitz

IN MEMORY OF

- ★ **Ruth Bricklin** from Andrew & Jodi Mirman
- ★ **Gilbert Katz** from Ruth Katz
- ★ **Betty Levinson** from Alice Schneider
- ★ **Barbara Lewis** from Michael Lewis
- ★ **Julia Liberman** from the Nusbaum family
- ★ **Carl Lieberman** from Libby Portoy and Alice Schneider
- ★ **Keith Mirman** from Dr. John & Patty Saks
- ★ **Marilyn Nusbaum** the Nusbaum family
- ★ **Mickey Nusbaum** the Nusbaum family
- ★ **Tim Scribner** from Tab Scribner
- ★ **Ruth Sweet** from Beth Feffer and family, and Alice Schneider
- ★ **Ruth Temple** from Dr. John & Patty Saks and Alice Schneider
- ★ **Marc Wolff** from Ethel Wolff & family

FLORAL FUND (SHABBAT FLOWERS)

IN MEMORY OF

- ★ **Clara Berns** from The Berns & Aronson families
- ★ **Seena Treiber** from Gloria & Tom Treiber

GRESS TORAH FUND

IN MEMORY OF

- ★ **Samuel Gross** from Alan Horn
- ★ **Sylvia Horn** from Alan Horn

HAKOAH EDUCATION FUND

IN HONOR OF

- ★ **Stacy Shulan** from Scott, Meghan, Benny, & Jacob Newman

KIDDUSH FUND

IN FOR THE RECOVERY OF

- ★ **Laurel Gress** from Sandra Schneier
- ★ **Dr. Harvey Sterns** from Sandra Schneier

IN MEMORY OF

- ★ **Bertha Iczkovitz** from Kevin Tucker
- ★ **Bill Rapport** from the Rapport family

KNITZVAH FUND

IN MEMORY OF

- ★ **Manny Iczkovitz** from Kevin Tucker
- ★ **Wayne Whigham** from Kate Waits & Marty Belsky
- ★ **Landon Zuckerman** from Laurie Zuckerman

LENORE GORDON SCHOLARSHIP FUND

IN MEMORY OF

- ★ **Raphael Leon Sardas** from Etty & Jacques Sardas

LISA BOTNICK MEMORIAL FUND

IN MEMORY OF

- ★ **Jean B. Cooper** from Robert & Regina Cooper
- ★ **Leonard Neuringer** from David & Susan Lemerman
- ★ **Karen Witt** from Ellen Botnick

LOUIS LOCKSHIN SCHOLARSHIP FUND

IN MEMORY OF

- ★ **Betty Levinson** from Jim & Susan Osherow
- ★ **Carl Lieberman** from Jim & Susan Osherow
- ★ **Ruth Sweet** from Jim & Susan Osherow
- ★ **Ruth Temple** from Jim & Susan Osherow

RABBI'S DISCRETIONARY FUND

IN HONOR OF

- ★ **the Bat Mitzvah of Addyson Richman** from Sid & Shirley Zetzer

IN FOR THE RECOVERY OF

- ★ **Rabbi Matt Marko** from Ellen Moss

IN MEMORY OF

- ★ **Abraham Belsky** from the Belsky-Waits family
- ★ **Esther Bober** from Dr. Robert & Janet Cohen
- ★ **Sally Ekus** from Sid & Shirley Zetzer
- ★ **Albert Fishman** from Paula Fishman

See CONTRIBUTIONS, Page 11

Contributions

CONTINUED FROM PAGE 10

- ★ **Bernard Friedman** from Rabbi Joan Friedman
- ★ **Elnora Glicksteen** from Gary A. Glicksteen, MD
- ★ **Melvin Glicksteen** from Gary A. Glicksteen, MD
- ★ **Joseph Haber** from Rabbi Stephen & Judy Grundfast
- ★ **Elsie Kodish** from Tanya Bodzin
- ★ **Betty Levinson** from Herb & Dianne Newman and Sid & Shirley Zetzer
- ★ **Sol Levinson** from Betty Levinson
- ★ **Paul Lewis** from Michael Lewis
- ★ **Carl Liberman** from Herb & Dianne Newman, and Sid & Shirley Zetzer
- ★ **Melissa Nusbaum** from Marv & Judi Shapiro
- ★ **Leona Pollock** from Sid & Shirley Zetzer
- ★ **Nancy Potter** from Sid & Shirley Zetzer
- ★ **Rolinda Schneiderman** from Judge Ted Schneiderman
- ★ **Windsor Smith** from the Crane family
- ★ **Ruth Sweet** from Herb & Dianne Newman, and Sid & Shirley Zetzer
- ★ **Ruth Temple** from Herb & Dianne Newman, and Sid & Shirley Zetzer
- ★ **Harvey Winer** from Hope Winer
- ★ **Jennie Winer** from Sid & Shirley Zetzer
- ★ **Sam Winer** from Sid & Shirley Zetzer
- ★ **Bella Zetzer** from Sid & Shirley Zetzer
- ★ **Bernard Zetzer** from Sid & Shirley Zetzer

REVEREND PHILLIP SALZMAN SCHOLARSHIP FUND

IN MEMORY OF

- ★ **Jerry Bass** from Jay & Mary Cheplowitz and family
- ★ **Morris Berzon** from Myrna Berzon
- ★ **Evelyn Cheplowitz** from Jay & Mary Cheplowitz
- ★ **Sidney Cheplowitz** from Jay & Mary Cheplowitz and family
- ★ **Carolyn Cooper Lockshin** from Robert Cooper
- ★ **Don Loomstein** from Gwynn Loomstein
- ★ **Harold Miller** from Paula Miller
- ★ **Burton Nobil** from Gwynn Loomstein
- ★ **Lois Nobil** from Gwynn Loomstein
- ★ **Mickey Nusbaum** from Anne Rothberg
- ★ **Anna Ruth Rosenthal** from Marvin Rosenthal
- ★ **Morris Rosenthal** from Marvin Rosenthal

- ★ **Harold Savage** from Sheri Nusbaum
- ★ **Marilyn Slavin** from Sheri Nusbaum and Anne Rothberg
- ★ **Louis Vigder** from Dr. Fred S. Vigder
- ★ **Rose Vigder** from Dr. Fred S. Vigder

SAFERSTEIN CARING FUND

IN APPRECIATION OF

- ★ **the hospitality of Ellen Moss** from Deanna & Gregg Manes

IN HONOR OF

- ★ **the birth of Cassandra Evelyn Kahn** from the Crane Family, Laurel Gress, and Dr. John & Patty Saks

IN MEMORY OF

- ★ **Rabbi Leibel Alevsky** from Dr. John & Patty Saks
- ★ **Harriet Horn** from Stacey, Rachel & Sarah Simonton
- ★ **Betty Levinson** from Trish & Steve Crane, Debbie Saferstein and Etty & Jacques Sardas
- ★ **Carl Lieberman** from Trish & Steve Crane, Debbie Saferstein and Etty & Jacques Sardas
- ★ **Evelyn Manes** from Gregg & Deanna Manes, Ellen Manes and Marvin Manes
- ★ **Louis Manes** from Marvin Manes
- ★ **Ruth Temple** from Trish & Steve Crane, Debbie Saferstein, and Etty & Jacques Sardas
- ★ **Daniel Smith** from the Crane family
- ★ **Ruth Sweet** from Trish & Steve Crane, Debbie Saferstein, and Etty & Jacques Sardas

SISTERHOOD

IN MEMORY OF

- ★ **Sallie Fishman** from Paula Fishman
- ★ **JoAnn Glickman** from Myron & Andrea Rabinovitz

STEPHEN M. GROSS MEMORIAL FUND

IN MEMORY OF

- ★ **Betty Levinson** from Scott & Paula Gross
- ★ **Carl Lieberman** from Scott & Paula Gross
- ★ **Ruth Sweet** from Scott & Paula Gross
- ★ **Ruth Temple** from Scott & Paula Gross

SYNAGOGUE FUND

IN APPRECIATION OF

- ★ **Beth El and the Congregation** from Bonnie Slavitt Moore

IN HONOR OF

- ★ **the birth of Archie Dax Natarus** from Laurel Gress and Dr. Larry & Harriet Richman
- ★ **the birth of Cassandra Evelyn Kahn** from Dr. Larry & Harriet Richman
- ★ **the naming of Noa Rose Leubitz** from Dr. Larry & Harriet Richman
- ★ **the Bat Mitzvah of Yael Moss** from Dr. Larry & Harriet Richman
- ★ **the Bat Mitzvah of Addyson Richman** from Ellen Moss
- ★ **the 60th Anniversary of the Bat Mitzvah of Rabbi Joan Friedman** from Hedda & David Morton
- ★ **the 65th Birthday of Stacy Shulan** from Dr. Larry & Harriet Richman
- ★ **the new home of Harriet Schneiderman** from Dr. Larry & Harriet Richman

FOR THE RECOVERY OF

- ★ **Laurel Gress** from Hal & Greta Foster, Libby Portnoy and Dr. Larry & Harriet Richman
- ★ **Sue Nusbaum** from Dr. Larry & Harriet Richman
- ★ **Faye Regal** from Dr. Larry & Harriet Richman and Marcia Stone
- ★ **Sid Steinberger** from Libby Portnoy
- ★ **Harvey Sterns** from Hal & Greta Foster and Libby Portnoy

IN MEMORY OF

- ★ **Sally Ekus** from Dr. Larry & Harriet Richman and Gloria Slavin
- ★ **Elnora Glicksteen** from Carrie & Robert Glicksteen
- ★ **Mel Glicksteen** from Carrie & Robert Glicksteen
- ★ **Jason Gloth** from Ellen Moss
- ★ **Ruth Gottlieb** from Sheila & Marty Gottlieb
- ★ **Clare Greenbaum** from Avi Greenbaum
- ★ **Dani Katz** from Sally & Alan Katz
- ★ **Evelyn Katz** from Sally & Alan Katz
- ★ **Betty Levinson** from Marsha Friedman, Dr. Larry & Harriet Richman, Rochelle Stone, Sid & Andrea Steinberger, and Alan & Patsy Siff

See CONTRIBUTIONS, Page 12



Contributions CONTINUED FROM PAGE 11

- ★ **Carl Lieberman** from Marsha Friedman, Ellen Moss and Dr. Larry & Harriet Richman, Alan & Patsy Siff, Sid & Andrea Steinberger, and Rochelle Stone
- ★ **Judith Lindner Rosenthal** from Dr. Larry & Harriet Richman
- ★ **Don Loomstein** from Marcia Stone
- ★ **Keith Mirman** from Bonnie & Randy Cohen and Dr. Larry & Harriet Richman
- ★ **Joseph S. Palazzo** from Sally & Alan Katz
- ★ **Anna Paskal** from Sally & Alan Katz
- ★ **Leona Pollock** from Dr. Larry & Harriet Richman
- ★ **Sam Schneiderman** from Judge Ted Schneiderman
- ★ **Mort Sobel** from Gloria Slavin
- ★ **Ruth Sweet** from Hal & Greta Foster, Marsha Friedman, Ruthie George, Sheila & Marty Gottlieb, Sheri Leubtiz, Sandra Levenson, Ellen Moss, Dr. Larry & Harriet Richman, Irene Rulnick and Landra & Emil Spieth, Alan & Patsy Siff, Gloria Slavin, Sid & Andrea Steinberger, Rochelle Stone, and Gilda Zelin
- ★ **Ruth Temple** from Bonnie & Randy Cohen, Marsha Friedman, Ellen Moss, Libby Portnoy, Dr. Larry & Harriet Richman, Alan & Patsy Siff, Gloria Slavin, Sid & Andrea Steinberger, and Rochelle Stone
- ★ **Shirley Wagan** from Judge Ted Schneiderman
- ★ **Harvey Winer** from Sid & Shirley Zetzer
- ★ **Sally Winer** from Stephen Winer
- ★ **David Yedidsion** from Dr. Larry & Harriet Richman
- ★ **Gloria Zeichner** from Sandra Levenson
- ★ **Morris Zetzer** from Sid & Shirley Zetzer

**Thank you for your
contributions.**

Contributions received before the 10th of the month will appear in the next month's issue.

Add to the Mi Sheberach List

Please join us in prayer for those who are not yet well.

Jewish tradition ordains that whenever the *Torah* is read, we are granted a special and uniquely opportune moment to invoke blessing for those in need of divine intervention.

The Rabbi will use the list during *Mi Sheberach* prayers at the *Torah*.

Your Name _____ Phone _____ Email _____

PLEASE ADD TO MI SHEBERACH LIST:

Patient's English name _____ Relation [i.e. friend, mother, etc.] _____

Hebrew name (Ben - male)(Bat - female) Mother's name _____

If in the hospital, which hospital is he/she in? _____

Please remember to remove a name when mi sheberach prayers are no longer required.

Contribute to Beth El

DATE _____

- Minimum (\$10)
- Chai (\$18)
- Double Chai (\$36)
- Triple Chai (\$54)

I AM ENCLOSING \$ _____

CONTRIBUTIONS TO FUNDS

- In Memory of _____
- For the Recovery of _____
- In Honor of _____
- In Appreciation of _____
- Other _____

Contributions received before the first of the month will appear in the next month's issue. Contributions may be submitted by mail or via Beth El's website.

CONGREGATIONAL FUNDS

- Edward Schneider Education Fund
- Floral Fund (Shabbat Flowers, \$36)
- Kiddush Fund
- Knitzvah Fund
- Rabbi's Discretionary Fund
- Synagogue Fund

SCHOLARSHIP FUNDS

- Frieda Weinberger Memorial Scholarship Fund
- Lenore Gordon Scholarship Fund
- Lola Salzman Scholarship Fund
- Louis Lockshin Scholarship Fund
- Marks and Goldfarb Youth Fund
- Max and Regina Schneier Memorial Fund
- Reverend Phillip Salzman Scholarship Fund
- Simon Kopelson Memorial Scholarship Fund
- Stephen M. Gross Memorial Fund

SPECIAL GIFT FUNDS

- Aaron Kranitz Memorial Fund
- Alexander and Lillian Medoff Memorial Music Fund
- Beatrice and Morris Sarlson and Family Beautification Fund
- Edward Abrahamson Memorial Fund
- Eleanore and Jerry Lippmann Bar/Bat Mitzvah Book Fund
- Gress Torah Fund
- Lisa Botnick Memorial Fund
- Luck Holocaust Fund
- Max M. Federhar Memorial Fund
- Saferstein Caring Fund

EDUCATION FUNDS

- Beth El Foundation for Jewish Education
- Hakoah Education Fund
- Irving Botnick Education Fund
- Jacob Reich Memorial Fund
- Kloner Family Fund

Office Use: Card Sent _____

Donation for (name/occasion)

Send card to

Address

City State Zip

Your name(s) as you wish them to appear in the Bulletin

Card is to be signed

Address

City State Zip

SEND YOUR CONTRIBUTIONS TO: Beth El Congregation ★ 750 White Pond Dr. ★ Akron, OH 44320