



BETH EL CONGREGATION BULLETIN

NOVEMBER/DECEMBER 2024 ★ AKRON, OHIO ★ CHESHVAN - KISLEV 5785

FIND US ONLINE 
Find a full-color issue
online at bethelakron.com.



JEREMY LIPTON
RABBI

Creating a community of comfort

Last year I was approached by the leadership of our Sisterhood and Caring Committee to offer a congregational forum to inform, empower, and support the members of our community about Jewish practices relating to death and dying. As a result of those conversations, I created

a very successful and well-attended two-part educational program entitled "Creating a Community of Comfort." Although the program generated enthusiasm and provided information and resources about mourners' immediate perceived needs, it also opened the door to a more in-depth conversation about what additional steps the Beth El community might take to provide ongoing support and accessible

See RABBI, Page 7



GREGG MANES
CO-PRESIDENT

YOM KIPPUR SPEECH

How to help our congregation thrive

Shalom and G'mar Chatima Tova.

It is wonderful to see all of you here again this evening. For anyone who I might not have yet met, my name is Gregg Manes and I am one of co-presidents here at Beth El. I have been a member of this beautiful synagogue for a little over 65 years.

My family was there when Beth El was formed and through the generations, we have served this synagogue in various roles throughout our rich history.

One special memory of mine at Beth El involves the camaraderie I felt as a high school student, when some of us would go to Rabbi Feffer's house to study. It was part of a program called the Leadership Training Fellowship and we had to take a test to qualify. I don't

See CO-PRESIDENTS, Page 8

TABLE OF CONTENTS

Synagogue Directory	2
Schedule of Services	2
Candle Lighting, Havdalah	2
Program Calendar Updates	2
Sisterhood	2
Calendars	3
November Yahrzeits	4
December Yahrzeits	5
In Memoriam	6
Friday Night With Friends	6
Challah Share	7
Hanukkah Ba'bayit	10
Education Program	11
Summer Camp Scholarship	11
Mazal Tov	12
Thank Yous	13
Torah Education Program	14
Shul BBQ	15
Contributions	16
Donate Non-Perishables	17
Contribution Forms	18

Our Mission Statement

Beth El Congregation is a Conservative synagogue that meets the spiritual and social needs of our congregants by providing a welcoming, vibrant and engaging community for Jewish life and religious practice in an egalitarian, progressive and caring environment.



בית אל
Beth El
Congregation

750 White Pond Drive
Akron, OH 44320
www.bethelakron.com
Office: (330)864-2105
betheloffice750@gmail.com

Affiliated with



The United Synagogue of
Conservative Judaism



The Jewish Theological
Seminary of America

Jeremy Lipton
Rabbi

Stephen Grundfast
Rabbi Emeritus

Stephen Stein
Hazzan Emeritus

Gregg Manes
Co-President
lawboy@sbcglobal.net

David Stock
Co-President
davidnathanstock@gmail.com

Susan Osherow
President Elect

Marc Merklin
Vice President

Josh Dickstein
Treasurer

Leora Cohen
Secretary

Erin Katz Ford
Executive Director
bethelservices750@gmail.com

Tab Scribner
Education Director
tscribner@bethelakron.org

Laurel Gress
Balat Koreh
laurelgress@neo.rr.com

Vol. LXXVIII No. 8

Schedule of services

MORNING MINYAN Wednesday & Friday, 7:30 a.m.

SHABBAT SERVICES Saturday, 9:15 a.m.

CANDLE LIGHTING

November 1	<i>Noach</i>	6:03 p.m.
November 8	<i>Lech-Lecha</i>	4:55 p.m.
November 15	<i>Vayera</i>	4:48 p.m.
November 22	<i>Chayei Sara</i>	4:44 p.m.
November 29	<i>Toldot</i>	4:40 p.m.
December 6	<i>Vayetzei</i>	4:39 p.m.
December 13	<i>Vayishlach</i>	4:40 p.m.
December 20	<i>Vayeshev</i>	4:42 p.m.
December 27	<i>Miketz</i>	4:46 p.m.

HAVDALAH

November 2	7:02 p.m.
November 9	5:54 p.m.
November 16	5:48 p.m.
November 23	5:44 p.m.
November 30	5:41 p.m.
December 7	5:40 p.m.
December 14	5:40 p.m.
December 21	5:43 p.m.
December 28	5:48 p.m.

Program Calendar Update

Thank you to everyone who helped make *Sukkot* and *Simchat Torah* a festive celebration! Special thanks to Julie Katz for organizing the Charcuterie in the *Sukkah*! Please mark your calendar for these events in November and December:

Nov 15: Friday Night With Friends:

Musical Friday night service, Potluck dinner and Challah Share

Dec 13: Friday Night With Friends:

Musical Friday night service, Potluck dinner + Latke Bar

Dec 28: *Hannukah Ba'bayit*,

6 p.m., sign-up required. Sign up at

tinyurl.com/hanukkahbabayit2024



From the Sisterhood

Now that the High Holy Days are over we look to our activities for *Hanukkah*. We are also planning some programs after the first of the year. Watch for upcoming publicity for these programs.

Soon you will receive your Sisterhood dues statements. The dues are \$36. These dues allow us to continue our work to support our congregation. We look forward to your continued support.

Knitzvah is continuing their valuable work. *Kiddush* Crew will be continuing their cooking and baking for our *Kiddush* enhancements. We can always use more cooks and bakers. Please contact Kay Lipton to volunteer. We also want to encourage members to sponsor a *Kiddush* for a special occasion.

Please contact me if you have any additional ideas or are able to step forward and volunteer for Sisterhood.

ANDREA RABINOVITZ, SISTERHOOD PRESIDENT

November 2024 Tishrei ★ Cheshvan 5785

SUNDAY	MONDAY	TUESDAY	WEDNESDAY	THURSDAY	FRIDAY	SATURDAY
SERVICES (unless otherwise noted) Wednesday 7:30 a.m. ★ Friday 7:30 a.m. ★ Saturday 9:15 a.m.					1 30 Tishrei Minyan, 7:30 a.m. Rosh Chodesh	2 1 Cheshvan Shabbat Service, 9:15 a.m., <i>Noach</i> Rosh Chodesh
3 2 Cheshvan	4 3 Cheshvan	5 4 Cheshvan	6 5 Cheshvan Minyan, 7:30 a.m.	7 6 Cheshvan	8 7 Cheshvan Minyan, 7:30 a.m.	9 8 Cheshvan Shabbat Service, 9:15 a.m., <i>Lech-Lecha</i>
10 9 Cheshvan	11 10 Cheshvan	12 11 Cheshvan Board Meeting, 7 p.m.	13 12 Cheshvan Minyan, 7:30 a.m.	14 13 Cheshvan	15 14 Cheshvan Minyan, 7:30 a.m. Friday Night with Friends, 6 p.m.	16 15 Cheshvan Shabbat Service, 9:15 a.m., <i>Vayeira</i>
17 16 Cheshvan Teen programming, 1 p.m.	18 17 Cheshvan Taste of Torah, 7 p.m.	19 18 Cheshvan Lunch & Learn, noon	20 19 Cheshvan Minyan, 7:30 a.m.	21 20 Cheshvan	22 21 Cheshvan Minyan, 7:30 a.m.	23 22 Cheshvan Shabbat Service, 9:15 a.m., <i>Chaye Sarah</i>
24 23 Cheshvan	25 24 Cheshvan L'Chaim Cooking Club, 6 p.m.	26 25 Cheshvan	27 26 Cheshvan Minyan, 7:30 a.m.	28 27 Cheshvan Thanksgiving	29 28 Cheshvan Minyan, 7:30 a.m.	30 29 Cheshvan Shabbat Service, 9:15 a.m., <i>Toldot</i>

December 2024 Cheshvan ★ Kislev 5785

SUNDAY	MONDAY	TUESDAY	WEDNESDAY	THURSDAY	FRIDAY	SATURDAY
1 30 Cheshvan Rosh Chodesh	2 1 Kislev Rosh Chodesh	3 2 Kislev	4 3 Kislev Minyan, 7:30 a.m.	5 4 Kislev	6 5 Kislev Minyan, 7:30 a.m.	7 6 Kislev Shabbat Service, 9:15 a.m., <i>Vayetzei</i>
8 7 Kislev	9 8 Kislev	10 9 Kislev Board Meeting, 7 p.m.	11 10 Kislev Minyan, 7:30 a.m.	12 11 Kislev	13 12 Kislev Minyan, 7:30 a.m. Friday Night with Friends, 6 p.m.	14 13 Kislev Shabbat Service, 9:15 a.m., <i>Vayishlach</i>
15 14 Kislev Teen programming, 1 p.m.	16 15 Kislev Taste of Torah, 7 p.m.	17 16 Kislev	18 17 Kislev Minyan, 7:30 a.m.	19 18 Kislev	20 19 Kislev Minyan, 7:30 a.m.	21 20 Kislev Shabbat Service, 9:15 a.m., <i>Vayeshev</i>
22 21 Kislev	23 22 Kislev L'Chaim Cooking Club, 6 p.m.	24 23 Kislev	25 24 Kislev Minyan, 7:30 a.m. Christmas	26 25 Kislev Hanukkah (Day 1)	27 26 Kislev Minyan, 7:30 a.m. Hanukkah (Day 2)	28 27 Kislev Shabbat Service, 9:15 a.m., <i>Miketz</i> Hanukkah (Day 3)
29 28 Kislev Hanukkah (Day 4)	30 29 Kislev Hanukkah (Day 5)	31 30 Kislev Hanukkah (Day 6)				

November Yahrzeits

NOVEMBER 1

Guillermo Alfonso
Ida Cohen Goldberg
Joseph Goldstein
Mollie Hoffer
Anna Levinson Korsun

NOVEMBER 2

Morris Ash
Bertha Geller
Neil Michael Katz
Dorothy Nobil
Thelma Osherow

NOVEMBER 3

Linda Coffsky
Beverly Eisele
Michael Lemerman

NOVEMBER 4

Anna Schneiderman
Betty Speyer

NOVEMBER 5

Janice Fish
Sergei Kanevsky
Dora Mermelstein
Harold B. Miller
Meyer Minkin
Abbe Stein

NOVEMBER 6

Lenore Glauberman
Daniel B. Heyman
Milton Lichten
Frances Sabetay
Mary Simpson

NOVEMBER 7

Sophie Apple
Susan Baruch
Herman Potrock
Joseph Rakusin
Anna Sholiton
Murray Stein

NOVEMBER 8

B. C. Fields
Katherine B. Morris
Gail Schlossberg

NOVEMBER 9

Hyman M. Ekus
Silvia Merkin
Dora Saltzman

NOVEMBER 10

Hariett Berke
Joseph Rubenstein
Jay Schlitt
Arnold Shapiro
Rubin Walotsky
Mildred Weiss

NOVEMBER 11

Gerson A. Borchardt
Annette Geller
Mary Krupp
Bertha Leeper
Paul Ross

NOVEMBER 12

Rae L. Cohen
Louis Geller
Benjamin Goldman
Harry Sandler

NOVEMBER 13

Geraldine Dachner
Morey Giller
Olga Goldstein
Eda Kanner
Eli Witt

NOVEMBER 14

Jacob Fish
Dr. Robert M. Hexter
Samuel Katzovitz
Morton Perlman
Susan Berzon Turcotte
Chana Weinstein

NOVEMBER 15

David Gilliland
Harry Rosenfeld
Harry Roth

NOVEMBER 16

Sarah Boksenbom
Milton Cooper
Beth Lawton
Jack Magilavy
Bernard Yonas

NOVEMBER 17

Nathan Levin
Miriam Mermelstein
Chiena Malka Rubin
Samuel Schneider
Eileen Shanahan

NOVEMBER 18

Rose Borodkin
Amy Rebecca Chesler
Nadia Govendo
Fannie Lieberman
Max Merklin
Alvin Salzman
Issac Sokol
Mel Temple

NOVEMBER 19

Leonard Jay Dienoff
Richard Mark Friedman
Israel Leaventon
Siegfried Oppenheimer

NOVEMBER 20

Sylvia Abramson
Jacob Wolf Backer
Sadie Farber
Doris Gress
Samuel Levey

NOVEMBER 21

Ella Goldstein
Morris J. Gordo
Mildred Kloner
Leo Lebeau
Alice Lewis

NOVEMBER 22

Murray Edelson
Alex Levine
Alvin Schlossberg
Donald Wagner

NOVEMBER 23

Nadyne Ash
David Desur
George Goldman
Michael Jacobs
Abraham Krupp
Jenny Lowry
Ernest Weinberger

NOVEMBER 24

Harry Ekus
Louis Marks
Nathan Milkman
Tillie Morton
Michael Schultz
Rose Shecht

NOVEMBER 25

Betty Barnett
Mary Bass
Morton Friedman
Shirley Gloth
Beryl Rothschild
Karen Sandel
Jeanette Schlitt
Leonard Sheff
Louis Simon

NOVEMBER 26

Anna Firestone
Lillian Geller
Jerry Limbert
Robert Shifrin
Jack Weintraub
Dr. Arthur Weissfeld
Fay Wish

NOVEMBER 27

Anna Diskin
Murial Friedman
Lani Rothstein
Abraham L. Zamosh

NOVEMBER 28

Jacob Bass
Sarah DeSure
Bessie Kauvar
Morris Kodish
Edith Mervis
Marian Oseroff

NOVEMBER 29

Morris Bass
Joseph B. Francus
Mitchell Kates
Lena Kaufman
Judith B. Litman
Ida Ruben
Rubin Saferstein

NOVEMBER 30

Emil Goldstein
Sarah Kraus
Phillip Mervis
Alice R. Smolly



*Don't forget Beth El
in your will*

For information, call
MARSHA FRIEDMAN
Endowment chair
(330)603-1890

December Yahrzeits

DECEMBER 1

Marian K.Lieberman
Helen Spector

DECEMBER 2

Donald Crigger
Joseph Liberman

DECEMBER 3

Ida Hamburg
Samuel Hoffer
Frances Sullivan

DECEMBER 4

Solomon Baruch
Moe Light
William Moss
Alfred Rosen
Miriam Silverman
David Wiener

DECEMBER 5

Edith Aberte
Tillie Aronson
Howard Lowry
Molly Millman
Jennie Roth

DECEMBER 6

Bessie Rothstein
Florence Trophe
Sarah Zinn

DECEMBER 7

Carl Iczkovitz
William Littman
Lillian Tapper
Bryne Wise

DECEMBER 8

Carole Bass
Helen Benson
Anna Cheplowitz
Jack (Jacob) Gilbert
Isadore Kaufman
Mildred Leib
Abraham Milstein
Rose Mirman

DECEMBER 9

Arthur Tuchman

DECEMBER 10

Jack Kent
Herbert Rosenblatt

DECEMBER 11

Karen Drerup
Charles Fischer
Dr. Irvin Kamenir
Karen Steinreich
Sofie Weiss

DECEMBER 12

Sigmund Berid
Anna Marks
Eugene Winer

DECEMBER 13

Fannie Belsky
Rose Finger
Goldie Leaventon
Emma Minster
Hyman Sandler
Robert Weiner
Leo Wiede

DECEMBER 14

Alan Adler
George Gross
David Lazowik
Sarah Lazowik
Dorothy Lerner
Rosie Rogovy
Elka Rudolf
Rose Salzman
Zalman Salzman
David Soibelman
Suzanne K. Tabachnik

DECEMBER 15

Thelma Cohen
Philip Diskin
Roman Feinstein
Sybil Gertz
Harold Krupp
Michelle Levin
Moses Marks
Helen Teichman
Sam Tuchman

DECEMBER 16

Irving Cohen
Mildred Glick
Ann Hendler

DECEMBER 17

David Schwartz

DECEMBER 18

Esther Ekus
Anna Kodish
Stanford Regal
Jeffrey Rosenthal
Leo Sweet

DECEMBER 19

Ben Mirman
Frederick J. Sterns
Cecelia Levin Wolfand

DECEMBER 20

Esther Effross
Kala Dvara Gordon
Allen Lewis
Rhoda Rozen
George Steinreich
Ruth Ungar

DECEMBER 21

Rose E. Dreyfuss

DECEMBER 22

Warren Glick
Lillian Katz
Rebecca Woloveck

DECEMBER 22

David Cohen
Harry Kodish
Ann Light

DECEMBER 24

Fannie Corman
Rose Fish
Esther Litwak
Carl Osherow
Louis Ross
Samuel Woloch

DECEMBER 25

Bessie Leventhal
Jakob Julius Weiss
Elaine Wieder
Rose Zellinger

DECEMBER 26

Emory Geller
Thomas Silver

DECEMBER 27

Jeffrey May
Minnie Pollock
Jacob Senser

DECEMBER 28

Rose Katz
Rachel Koplin
Fannie Leubitz
Bernice Wakser
Milton Zetzer

DECEMBER 29

Sam Horn
Raleigh C. Marks
Bernard Steinberger

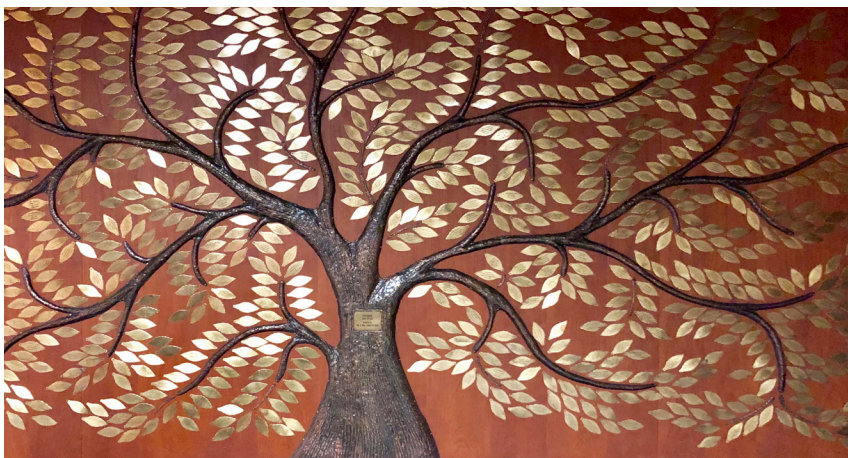
DECEMBER 30

Norma Katz
Jacob Reiser
Jack Shimer
Michael Wieder

DECEMBER 31

Eva Rubin
Sam Schneiderman
Rose Shapiro

*Please inform the office
of Yahrzeit omissions
or corrections.*



Tree of Life

Our magnificent Tree of Life was created to record the happy events in the lives of Beth El members and their families. A birth, a wedding, a Bar/Bat Mitzvah, a confirmation, an anniversary — all are among the milestones that can be remembered on the leaves of the Tree of Life.

The cost of a leaf is \$125. You may use three or four lines with up to 23 letters per line. To order, call **Sherri Leubitz (330)867-0364**

In Memoriam

Beth El Congregation notes with sorrow the passing of

Janet Helfgott-Emmer

Sandra Moskowitz

Sandra Moskowitz, a wonderful woman with a beautiful smile, who was a devoted wife, mother, grandmother, and great grandmother, passed away on September 27 at the age of 93.

She is survived by her loving and devoted husband of 72 years, Aaron; their children Steven (Laura), David (Luanne), Paul, and Karen (Tim), grandchildren, Jill (John), Nathan (Kristin), Sophie, Simon, Rachel, and Kyle (Jayshree); and great grandchildren Jeremy and Jace, dear sister Helaine Zemel and her children, Michelle, Tracy, Neil, Glenn (Ginny); as well as many friends and relatives. She is predeceased by her mother Pearl, Aunt Hazel, brother-in-law Herman Zemel, and nephew Kevin Zemel. A multitude of photos of her loved ones adorn the walls and

shelves in her home. She spent her life nurturing family and assuring an everlasting closeness.

Sandra, affectionately known as Sandy, worked as a bookkeeper during her career for Bober & Markey CPA's and Winer & Bevilacqua CPA's while raising her four kids. After retirement, Sandy and Arnie were dedicated volunteers at Akron General Hospital, E.J. Thomas Performing Arts Hall, Akron Civic Theater, and the General Justin T. Rogers Hospice Care Center where her kindness and compassion made a lasting impact.

Sandy's love for dogs was obvious by the many dog figurines in her home, and she loved her own dogs Cindy, Molly, and Lucky over the years. She enjoyed playing the slot machines, and could probably solve any police case after watching countless episodes

of TV shows like Matlock and Perry Mason. She also enjoyed the sounds of the old crooners like Perry Como, Frank Sinatra, and Bing Crosby. Over the years, she enjoyed socializing with friends, playing Mahjong and Canasta, garage sales, and thrift shopping, but nothing was more important to her than her family. She always gave priority to spending time with her family and attending events and activities that her children and grandchildren participated in. Her warmth, wisdom, and unwavering support for her family and friends will be deeply missed by all.

In lieu of flowers, please feel free to make a donation to your favorite charity in Sandra's memory.

Please inform the office of omissions or corrections.

Friday, Nov. 15 & Dec 13 at 6pm

Beth El's Musical Service

"Friday Night with Friends"

**Join us for our Family Friendly
Musical Kabbalat Shabbat Service**

**with communal singing and musical accompaniment,
followed by a delicious potluck dinner.**

RABBI, from Page 1

resources for an even wider audience.

I am extremely excited to announce that the initial project has continued to grow and evolve, thanks to the efforts of our newly expanded Committee of Caring and Comfort under the leadership of our member, Hedda S. Morton. Hedda and her committee have spearheaded the transformation of my interactive project into our new "Illness, Death, and Bereavement Guide," a dynamic and detailed document that has just been published on the Beth El website for everyone's use.

Among the many issues that the new Guide explores include:

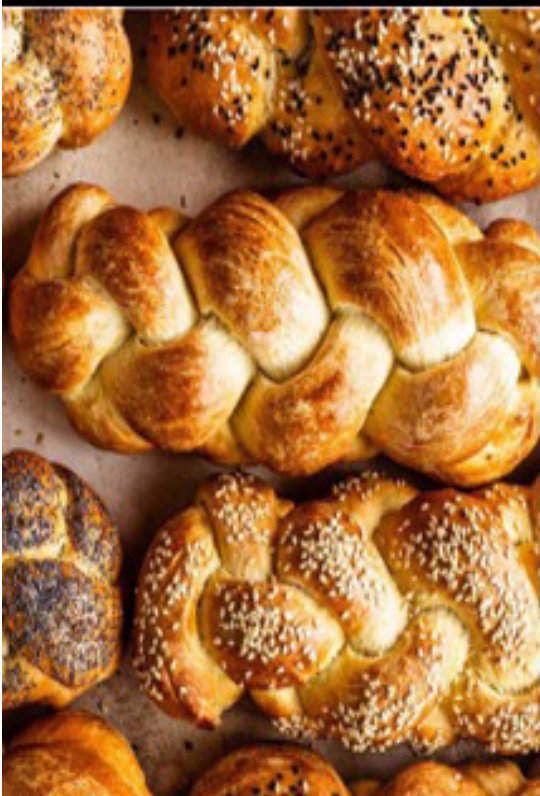
- ★ WHEN do individuals or families need support?
- ★ WHAT KIND of support do they need?
- ★ WHERE do they need to receive that support?
- ★ How do we ENCOURAGE people to communicate their needs?
- ★ WHAT do WE need to have in place to be most effective and responsive?
- ★ HOW can we (as a synagogue community) plan in advance to anticipate those needs?

The Guide also provides practical information about supporting those among us who may be facing illness, as well as those who may be caring for loved ones. In this light, it highlights the potency of engaging in acts of *Bikur Cholim* (Visiting the Sick).

Finally, the last section of the Guide includes an extended section titled "Death and Bereavement: Customs, Ceremonies, and Traditions" that reminds us not only of our rich heritage, but that also leads us through the steps that we might take as we honor and memorialize those whom we love. To access our new online Guide, simply visit bethelakron.com/illness-death-bereavement-guide.

I know that you will join me in extending our heartfelt thanks to Hedda, as well as to her editorial collaborators, Marsha Friedman and Kay Lipton, for the tremendous service that they have done on behalf of all of us. *Kol HaKavod!!*

L'shalom,
RABBI JEREMY LIPTON



IT'S A CHALLAH SHARE!

Bring your Challah to share
during the potluck after our
FRIDAY NIGHT WITH FRIENDS
musical service

Friday night, November 15th
@6:00 PM

Click here to sign up and
share your recipe!

CO-PRESIDENTS, continued from Page 1

remember any of the specific *Torah* lessons, but I do recall that we had homework, so that we could be prepared for class. I remember driving there in the good weather as well as bad. I remember munching on pastries and fruit with the likes of Marty Eichner, Mike Sokol, Dave Wolinski (of blessed memory), my sister Ellen Manes, and Bruce Braun. We all knew each other from Hebrew school, and since we were small children. I felt a kinship with them that was seminal in my life here at Beth El.

Through that experience and so many others, my family was always a part of Beth El, and Beth El will always be a part of my family. And what do families do? We support one another. We are there for one another. We help each other out because when we all come together, we are more fulfilled and our lives are richer. So how does our family continue to thrive?

1) First, we celebrate.

We celebrate through ceremonies and festivals of all manners. My heart is so full because we had and have so much to celebrate. We celebrate *Bar* and *Bat Mitzvahs*. We celebrate weddings and births. We celebrate those who have been stalwarts in this community and all that they have done and continue to do.

In the coming year, we will be honoring one of our very beloved, long-time members — Susan Alfonso — and celebrate all that she and her wonderful family have done for our community. Susan Osherow, our President-Elect, has been working tirelessly with the Alfonso family to prepare for what will be an unforgettable celebration — thank you, Susan Osherow for all you're doing!

2) Next, we come together.



We have so many wonderful programs for people of all ages, starting with our youngest members. Tab Scribner, our Education Director, is doing a phenomenal job teaching our children about *Torah* and our traditions. We offer mini-*Minyan* for our youngest members as well as Junior Congregation for our older children. Our newest *B'nei Mitzvah* also participate and lead portions of our services alongside our adult members.

Our weekly *Minyanim* and services are beautifully led by both lay leaders and the unbelievable Rabbi Lipton. Of all the services he leads, one special gem is our Friday Night with Friends, which is a musical service followed by a potluck dinner. The service is calming and beautiful. The food is delicious and wide-ranging.

We have so many other programs to help us celebrate our holidays, such as Charcuterie in the *Sukkah*, our family *Hanukkah* party, *Shavuot* celebration with cheesecake cook-offs, a *Purim Shpiel*, and a meaningful second *Pesach seder*.

Even at the most difficult moments, we are there to support one another by remembering those we have lost and helping individual families through their grief. This past year, we had programming on the Jewish traditions surrounding death and mourning to help wrap one another in comfort as we all go through these stages in life. Here in Akron we are one family within a much larger Jewish family, and this year we needed to lean on one another as we processed and mourned the horrific events of October 7, the first commemoration of which we honored this past month. We consistently come together and strive to find more of them.

3) Third, we evolve and grow.

We are a Conservative synagogue that provides an egalitarian, progressive, and caring environment.

When I look around our synagogue, I see so much of what I have known my whole life. I remember a time when our synagogue had three times as many people as it does today. I remember when there wasn't an open seat in

See CO-PRESIDENTS, Page 7

CO-PRESIDENTS, continued from Page 6

the room for services. I remember all the good times we had over those years at Beth El.

But I also see how we have become something we never could have been in those days because, while we are small (compared to then), we are also mighty, as I stand here today. Instead of just having sermons on Saturday mornings, we get to regularly engage in study and discussions. Everyone who wants to, can sit down and chat with the Rabbi every week. If you haven't done so yet, I encourage to reach out and say "hi" to him, and take the opportunity to get to know one another.

Here at Beth El, we get to pray together, break bread together, laugh together, and cry together. We get to have these connections and engage one another at Beth El in ways that are just not possible at larger synagogues. It brings such joy, and I think it is so special that we have such strong relationships. I cherish the memories of what Beth El used to be, and I am hopeful about what it is and what it will become.

All that said, our potential for growth also exists. A recent study determined that there are over 7,000 Jewish people in the Summit, Portage, and Medina Counties but that only a small fraction of them are affiliated with a synagogue. This offers a great opportunity for all of us to speak to our family, friends, and colleagues that are unaffiliated and invite them to come see what we are all about. This is not only important to our community but good for the soul. Every time a new family comes to our services, it truly warms my heart because they are the future of Beth El.

4) Your financial support.

We are able to thrive because when we join together, we make it

all happen. Every ounce of support enables us to eat together and enjoy comfort as we come together. The great news is that there are opportunities right now and year-round to provide that financial support. We have our Annual Raffle, Yearbook ad opportunities, weekly flower and *Kiddush* sponsorships, and wonderful opportunities to honor our leaders (like our upcoming event in the spring honoring Susan Alfonso).

5) Safety.

Our family has to be safe and secure, and in this climate, we also have to be vigilant. With your assistance, Beth El, along with others, helps support and provide for the Jewish Akron Director of Community Security. The Security Director establishes protocols, procedures, and opportunities for improvement at Beth El, the JCC, and the other Jewish organizations in Akron and Canton. We determined that it is prudent to have police and security present at most Beth El functions. You will notice that today we have several officers are present and we thank them for being here for us.

Security is expensive and a significant part of our budget. That's why this year you saw that we are asking everyone to make an extra contribution to support our security that is in line with other congregations. For those of you that are able to meet that, thank you for helping to keep all of us safe.

6) We would be nowhere without our leaders.

I would like to thank Rabbi Jeremy Lipton for his dedicated leadership and guidance. With nearly weekly *Shabbat* dinners, his wife, Dr. Kay Lipton, continues to make it a point to invite as many of the congregation members to dinner on Friday nights as possible. She successfully planned a beautiful Sisterhood *Shabbat*

this past spring, where almost 70 women participated in the service. This year we anticipate similar participation.

It takes a yeomans effort to coordinate all of the participants, or in this case, perhaps a PhD. This year my family is sponsoring the *Kiddush* for the Sisterhood *Shabbat* in memory of my mother who passed away this past year. I would also like to thank Erin Katz Ford, our Executive Director. Her leadership and toiling behind the scenes are unending. She ensures that all of the details are taken into consideration so that the events at Beth El are successful.

Tab Scribner, our Education Director, along with all our teachers, have done phenomenal jobs at leading the future of our congregation... our children.

I would also like to thank the board and the many volunteers who help plan and participate in the events. Their countless hours of labor, love, and care are invaluable, and are all part of the many moving parts that make our synagogue thrive. Also I would like to thank my Co-President David Stock whose leadership has been invaluable to our synagogue.

Finally, I would like to thank my children, Alexa, Jordan, and Eric and their spouses, as well as my grandchildren, Jackson, Harrison, and Porter. They make me smile with joy and pride. I would also like to thank my dad, Marvin Manes, who has set an example for me and made me the person that I am today. I would like to thank my rock and my main support system... Deanna. I thank you and love you for all that you do. You are the best.

I wish you all a Happy New Year.

Thank you,
GREGG MANES
CO-PRESIDENT



Hanukkah Ba'bayit

This year *Hanukkah* falls very late on the calendar so, we have planned an alternative way for our congregation to celebrate the holiday together.

On Saturday, December 28, we will have *Hanukkah Ba'bayit*!

The event will start at 6PM and include a potluck dairy/veggie dinner at each host family home.

The synagogue will provide latkes to add to the delicious meal.

After dinner there will be a short *Havdalah* ceremony marking the end of *Shabbat* followed by *Hanukkah* candle lighting. Please sign up to either be a host or to attend. We will group people together so you are with both old and new friends, as we celebrate the fourth night of *Hanukkah* together. Any questions?

Please email Sarah Greenblatt
at sgreenbrick@gmail.com
or 330-687-0203

RSVP HERE

Religious School is in full swing

**TAB SCRIBNER**

And...we can breathe again. It has been a very busy two months. We welcomed back the kids way back on September 3, and although it was barely a few months ago, it feels so much longer somehow.

We're in full swing now, Sundays, Tuesdays, Junior Congregation, and even a few teen programs thrown in for good measure. Prayer Buddies will also be reaching out to families to get started now that the High Holy Days are over.

October 20 was a big day for us with a Religious School *Sukkah* Hop with our friends from Temple Israel and Anshe Sfard. And later in the day our teens gathered for some special "teen only" edutainment.

For more information about the Religious School and Children's Programming, the easiest way to reach me is by email at tscribner@bethelakron.org.



Apply for a summer camp scholarship

Jewish Overnight Summer Camp helps form life-long friendships, creates a sense of community and belonging, and aids in forging a sense of self and Jewish identity. Every summer, communities form where youth and teens can grow and mature in a safe environment at an intersection of interests (sports, environment, etc.) within a supportive community. Moreover, it integrates Judaism into intentional yet spontaneous experiences, helping to foster a love for and deep connection to Jewish life. Summer camp scholarship applications for overnight camp are now open. Apply at tinyurl.com/jewishsummercamp2025. The application window will close on Friday, December 6 at 3 p.m.

Mazal Tov

Beth El Congregation offers its congratulations to:

Jessica and Daniel Hurst

on the birth of

Violet Avery Hurst

BORN ON THURSDAY, SEPTEMBER 12.

Proud grandparents are Mark and Darla Kent of Akron
and Mike and Carol Hurst of Biggers, Arkansas.

David Stock

who was promoted to Captain in the U.S. Navy





Thank you

GRETA & HAL FOSTER

for sponsoring *Minyan* breakfast on August 2.

BONNIE & RANDY COHEN

for sponsoring flowers on Sept. 7 in heartfelt appreciation to our friends and family for the wonderful farewell *Kiddush*.

ALL THE FRIENDS

for sponsoring *Kiddush* on Sept. 7 in honor of
BONNIE & RANDY COHEN

SHERRY & MARTY HELLMAN

for sponsoring breakfast on Sept. 13 in memory of
BERNARD HELLMAN

JULIE & RANDY KATZ

for sponsoring *Kiddush* on Sept. 14 in honor of
Julie's birthday

JESSE FISCHER

for sponsoring flowers on Sept. 14 in memory of
LAUREL FISCHER

THE SAFERSTEIN FAMILY

sponsoring flowers on Sept. 21 in memory of
DOROTHY WEINER

THE STOCK FAMILY

for sponsoring *Kiddush* on Sept. 21 in honor of
David's promotion to Captain

NANCY MERMELSTEIN & FAMILY

for sponsoring flowers on Sept. 28 in memory of
MEL MERMELSTEIN

JIM & SUSAN OSHEROW

for sponsoring *Kiddush* on Sept. 28
in honor of their anniversary.

ANDREA & SID STEINBERGER, JEANNIE EPPERLY & JEFF MILLER, AND BETH EL SISTERHOOD

for sponsoring *Rosh Hashanah* Day 2
Kiddush on Oct 4

ELLEN MOSS

for sponsoring breakfast on Oct. 11 in memory of
SAM DRUCKER

STEVE & RITA BOTNICK, LAUREL GRESS, RANDY & JULIE KATZ AND FAMILY, ALAN & SALLY KATZ, SHARON & MARC MERKLIN, ELLEN MOSS, GREGG & DEANNA MANES, JIM, SUSAN, & RACHEL OSHEROW, DR. MIKE & KATHY SEIDER, THE STOCK FAMILY, AND BETH EL SISTERHOOD

for sponsoring *Yom Kippur* Break-the-Fast on Oct. 12.

THE SAFERSTEIN FAMILY

for sponsoring *Kiddush* on Oct. 18 in memory of
SHELDON SAFERSTEIN

BETH EL SISTERHOOD

for the anniversary wishes from
DR. LARRY & HARRIET RICHMAN
and for the anniversary wishes from
ESTHER & LARRY HEXTER

SPONSORSHIPS AVAILABLE

Did you know that you can sponsor *Shabbat* flowers or *Kiddush* in honor of a milestone or in memory of *Yahrtzeit*? For more information, please call 330-864-2105 x 118 or email Erin Katz Ford.



Religious School

Torah time



Rabbi Moshe Druin, a *sofer* (a specially trained calligrapher who transcribes religious texts) fixes Beth El Congregation's Torah scrolls.



September 15

Shul BBQ



Contributions

AARON KRANITZ MEMORIAL FUND

BEST WISHES TO

- ★ **Bonnie & Randy Cohen** from Joe & JoEllen Kodish

IN MEMORY OF

- ★ **Janet Helfgott-Emmer** from Joe & JoEllen Kodish
- ★ **Sedell Kamenir** from Joe & JoEllen Kodish
- ★ **Sandra Moskowitz** from Joe & JoEllen Kodish

BETH EL FOUNDATION FOR JEWISH EDUCATION

IN MEMORY OF

- ★ **Dr. Irving Kauvar** from Leslye & Stephen Lapidus

EDWARD SCHNEIDER EDUCATION FUND

HAPPY TRAILS TO

- ★ **Bonnie & Randy Cohen** from Ellen Moss

IN HONOR OF

- ★ **the special birthday of Marilyn Groden** from Libby Portnoy and Karen Nackes
- ★ **the special birthday of Shirley Zetzer** from Libby Portnoy and Karen Nackes
- ★ **The special birthday of Julie Katz** from Ellen Moss
- ★ **the promotion of Captain David Stock** from Alice Schneider
- ★ **the anniversary of Jim & Susan Osherow** from Ellen Moss

IN MEMORY OF

- ★ **Janet Helfgott-Emmer** from Alice Schneider
- ★ **Sedell Kamenir** from Alice Schneider
- ★ **Daniel Seth Katz** from Tammy & Mark Gersman
- ★ **Barbara Lewis** from Michael Lewis
- ★ **Sandra Moskowitz** from Alice Schneider
- ★ **Pauline Pessio** from Esther & Jacques Sardas
- ★ **Harold Reuben** from Phil & Livia Kades & family

GRESS TORAH FUND

IN APPRECIATION OF

- ★ **Beth El** from Matt Comshaw-Arnold

IN HONOR OF

- ★ **the Bat Mitzvah of Talia Moskovitz** from Esther, Larry, & Miriam Hexter

IN MEMORY OF

- ★ **Marie Miriam Bloch** from Marta Roth

HAKOAH EDUCATION FUND

IN MEMORY OF

- ★ **Ellen Winer** from Steve Winer

IRVING BOTNICK EDUCATION FUND

IN MEMORY OF

- ★ **David Bloom** from Delores Botnick

KIDDUSH FUND

FOR THE RECOVERY OF

- ★ **Kate Waits** from Ellen Moss

IN MEMORY OF

- ★ **Janet Helfgott-Emmer** from Lourie Rapport
- ★ **Sedell Kamenir** from Lourie Rapport
- ★ **Sandra Moskowitz** from Laurie Rapport
- ★ **Charlotte Schwartz** from Tammy & Mark Gersman

KNITZVAH FUND

IN MEMORY OF

- ★ **Sydelle Cohen** from Ellie & Jay Minkin
- ★ **Janet Helfgott-Emmer** from Marsha Friedman
- ★ **Sedell Kamenir** from Marsha Friedman
- ★ **Sandra Moskowitz** from Marsha Friedman
- ★ **Dora Beja Sardas** from Esther & Jacques Sardas

LISA BOTNICK MEMORIAL FUND

IN MEMORY OF

- ★ **Marie Miriam Bloch** from Marta Roth

LOLA SALZMAN SCHOLARSHIP FUND

IN MEMORY OF

- ★ **Alvin Salzman** from Joe & Myrna Salzman

LOUIS LOCKSHIN SCHOLARSHIP FUND

IN MEMORY OF

- ★ **Janet Helfgott-Emmer** from Jim & Susan Osherow
- ★ **Sedell Kamenir** from Jim & Susan Osherow
- ★ **Sandra Moskowitz** from Jim & Susan Osherow

LUCK HOLOCAUST FUND

IN MEMORY OF

- ★ **Marie Miriam Bloch** from Marta Roth

RABBI'S DISCRETIONARY FUND

IN APPRECIATION OF

- ★ **Rabbi Lipton** from Rebekkah Rubin & Adam Birdsall, Rob & Andrea Minster, and Molly & David Stock

IN HONOR OF

- ★ **the special birthday of Janet Cohen** from Sid & Shirley Zetzer
- ★ **the 90th birthday of Marvin Manes** from Sandra Schneier
- ★ **the special occasions of Marilyn & Harvey Groden** from Dr. Robert & Janet Cohen

IN MEMORY OF

- ★ **Guillermo Alfonso** from Susan Alfonso
- ★ **Kitty Berger** from Dr. Robert & Janet Cohen
- ★ **Sydelle Cohen** from Dr. Robert & Janet Cohen
- ★ **Eleanor Friedman** from Rabbi Joan Friedman
- ★ **Marvin Greenbaum** from Albert & Jack Greenbaum
- ★ **Pearl Grundfast** from Rabbi Stephen & Judith Grundfast
- ★ **Susan Haimes** from Rabbi Stephen & Judith Grundfast
- ★ **Janet Helfgott-Emmer** from Laurel Gress, Herb & Dianne Newman, and Sid & Shirley Zetzer
- ★ **Sedell Kamenir** from Herb & Dianne Newman, and Sid & Shirley Zetzer
- ★ **Sarah Ella Levinson** from Betty E. Levinson
- ★ **Sandra Moskowitz** from Herb & Dianne Newman, and Sid & Shirley Zetzer

See CONTRIBUTIONS, Page 15

Contributions

CONTINUED FROM PAGE 16

- ★ **Ernest Richman** from Dr. Larry & Harriet Richman
- ★ **Joseph Ungar** from Dr. Larry & Harriet Richman

REVEREND PHILLIP SALZMAN SCHOLARSHIP FUND

IN MEMORY OF

- ★ **Dr. Robert Benson** from the Benson family
- ★ **Benjamin Heisler** from Charlotte Heisler & family
- ★ **Hyman Kodish** from Roslyn Thingelstad
- ★ **David Lazovik** from Joe & Myrna Salzman
- ★ **Sarah Lazovik** from Joe & Myrna Salzman
- ★ **Raisel Salzman** from Joe & Myrna Salzman
- ★ **Zalman Salzman** from Joe & Myrna Salzman
- ★ **Elliott Schultz** from Joe & Myrna Salzman
- ★ **Carl Waxman** from Neil, Carrie, & Molly Waxman
- ★ **Ida Waxman** from Neil, Carrie, & Molly Waxman

SAFERSTEIN CARING FUND

IN MEMORY OF

- ★ **Marie Miriam Bloch** from Marta Roth
- ★ **Harriet Horn** from Alan Horn
- ★ **Julius Horn** from Alan Horn
- ★ **Janet Helfgott-Emmer** from Steve & Trish Crane, Debbie Saferstein, and Jacques & Ety Sardas
- ★ **Sedell Kamenir** from Steve & Trish Crane, Jacques & Ety Sardas, and Debbie Saferstein

- ★ **Sandra Moskowitz** from Steve & Trish Crane, Debbie Saferstein, and Jacques & Ety Sardas
- ★ **Sarah Platnick** from Alan Horn
- ★ **Faith Stahl** from Alan Horn

SISTERHOOD FUND

IN HONOR OF

- ★ **the anniversary wish** from Esther & Larry Hexter

IN MEMORY OF

- ★ **Dorothy Herzberg** from Gail Herzberg Greenberg

STEPHEN M. GROSS MEMORIAL FUND

IN MEMORY OF

- ★ **Stephen Gross** from Sharon Halpern & family
- ★ **Janet Helfgott-Emmer** from Scott & Paula Gross
- ★ **Sedell Kamenir** from Scott & Paula Gross
- ★ **Sandra Moskowitz** from Scott & Paula Gross

SYNAGOGUE FUND

BEST WISHES TO

- ★ **Bonnie & Randy Cohen** from Dr. Larry & Harriet Richman

IN APPRECIATION OF

- ★ **Beth El** from Matt Comshaw-Arnold

IN HONOR OF

- ★ **the special birthday of Janet Cohen** from Libby Portnoy
- ★ **the special birthday of Lourie Rapport** from Jeri Glueck

- ★ **the special birthday of Howard Simone** from Jeri Glueck
- ★ **the special birthday of Janet Cohen** from Hal & Greta Foster
- ★ **the 90th birthday of Janet Cohen** from Dr. Larry & Harriet Richman
- ★ **the 90th birthday of Marilyn Groden** from Dr. Larry & Harriet Richman
- ★ **the Bat Mitzvah of Talia Moskowitz** from Dr. Larry & Harriet Richman
- ★ **the promotion of Captain David Stock** from Dr. Larry & Harriet Richman

FOR THE RECOVERY OF

- ★ **Rabbi Stephen Grundfast** from Sandra Levenson, and Dr. Larry & Harriet Richman
- ★ **Rochelle Stone** from Dr. Larry & Harriet Richman

IN MEMORY OF

- ★ **Stanley Gertz** from Karen Rosenfeld
- ★ **Janet Helfgott-Emmer** from Dr. Larry & Harriet Richman, Sid & Andrea Steinberger, Rochelle Stone, Alan & Patsy Siff
- ★ **Sandra Moskowitz** from Sheila & Marty Gottlieb, Harvey & Marilyn Groden, Dr. Larry & Harriet Richman, Sid & Andrea Steinberger, Alan & Patsy Siff, and Rochelle Stone
- ★ **Sedell Kamenir** from Dr. Larry & Harriet Richman, Alan & Patsy Siff, Sid & Andrea Steinberger, Rochelle Stone

**Thank you for your
contributions.**

Contributions received after the 15th of the month will appear in the next issue.

Donate non-perishables

Beth El has an easy and wonderful way to do meaningful *Mitzvot*! Consider bringing non-perishable food items to donate. The magnificent wooden food basket crafted by Dick Rossen "OBM", is located just inside the main lobby door of the Synagogue. Let's see if we can fill the basket to the brim!



Add to the Mi Sheberach List

Please join us in prayer for those who are not yet well.

Jewish tradition ordains that whenever the *Torah* is read, we are granted a special and uniquely opportune moment to invoke blessing for those in need of divine intervention.

The Rabbi will use the list during *Mi Sheberach* prayers at the *Torah*.

Your Name _____ Phone _____ Email _____

PLEASE ADD TO MI SHEBERACH LIST:

Patient's English name _____ Relation [i.e. friend, mother, etc.] _____

Hebrew name (Ben - male)(Bat - female) Mother's name _____

If in the hospital, which hospital is he/she in? _____

Please remember to remove a name when mi sheberach prayers are no longer required.

Contribute to Beth El

DATE _____

- ☐ Minimum (\$10)
- ☐ Chai (\$18)
- ☐ Double Chai (\$36)
- ☐ Triple Chai (\$54)

I AM ENCLOSING \$ _____

CONTRIBUTIONS TO FUNDS

- ☐ In Memory of _____
- ☐ For the Recovery of _____
- ☐ In Honor of _____
- ☐ In Appreciation of _____
- ☐ Other _____

Contributions received before the first of the month will appear in the next month's issue. Contributions may be submitted by mail or via Beth El's website.

CONGREGATIONAL FUNDS

- ☐ Edward Schneider Education Fund
- ☐ Floral Fund (Shabbat Flowers, \$36)
- ☐ Kiddush Fund
- ☐ Knitzvah Fund
- ☐ Rabbi's Discretionary Fund
- ☐ Synagogue Fund

SCHOLARSHIP FUNDS

- ☐ Frieda Weinberger Memorial Scholarship Fund
- ☐ Lenore Gordon Scholarship Fund
- ☐ Lola Salzman Scholarship Fund
- ☐ Louis Lockshin Scholarship Fund
- ☐ Marks and Goldfarb Youth Fund
- ☐ Max and Regina Schneier Memorial Fund
- ☐ Reverend Phillip Salzman Scholarship Fund
- ☐ Simon Kopelson Memorial Scholarship Fund
- ☐ Stephen M. Gross Memorial Fund

SPECIAL GIFT FUNDS

- ☐ Aaron Kranitz Memorial Fund
- ☐ Alexander and Lillian Medoff Memorial Music Fund
- ☐ Beatrice and Morris Sarlson and Family Beautification Fund
- ☐ Edward Abrahamson Memorial Fund
- ☐ Eleanore and Jerry Lippmann Bar/Bat Mitzvah Book Fund
- ☐ Gress Torah Fund
- ☐ Lisa Botnick Memorial Fund
- ☐ Luck Holocaust Fund
- ☐ Max M. Federhar Memorial Fund
- ☐ Saferstein Caring Fund

EDUCATION FUNDS

- ☐ Beth El Foundation for Jewish Education
- ☐ Hakoah Education Fund
- ☐ Irving Botnick Education Fund
- ☐ Jacob Reich Memorial Fund
- ☐ Kloner Family Fund

Office Use: Card Sent _____

Donation for (name/occasion) _____

Send card to _____

Address _____

City State Zip _____

Your name(s) as you wish them to appear in the Bulletin _____

Card is to be signed _____

Address _____

City State Zip _____

SEND YOUR CONTRIBUTIONS TO: Beth El Congregation ★ 750 White Pond Dr. ★ Akron, OH 44320